

SECTION 36, T.8N., R.1E., S.L.B. & M.

IN WEBER COUNTY

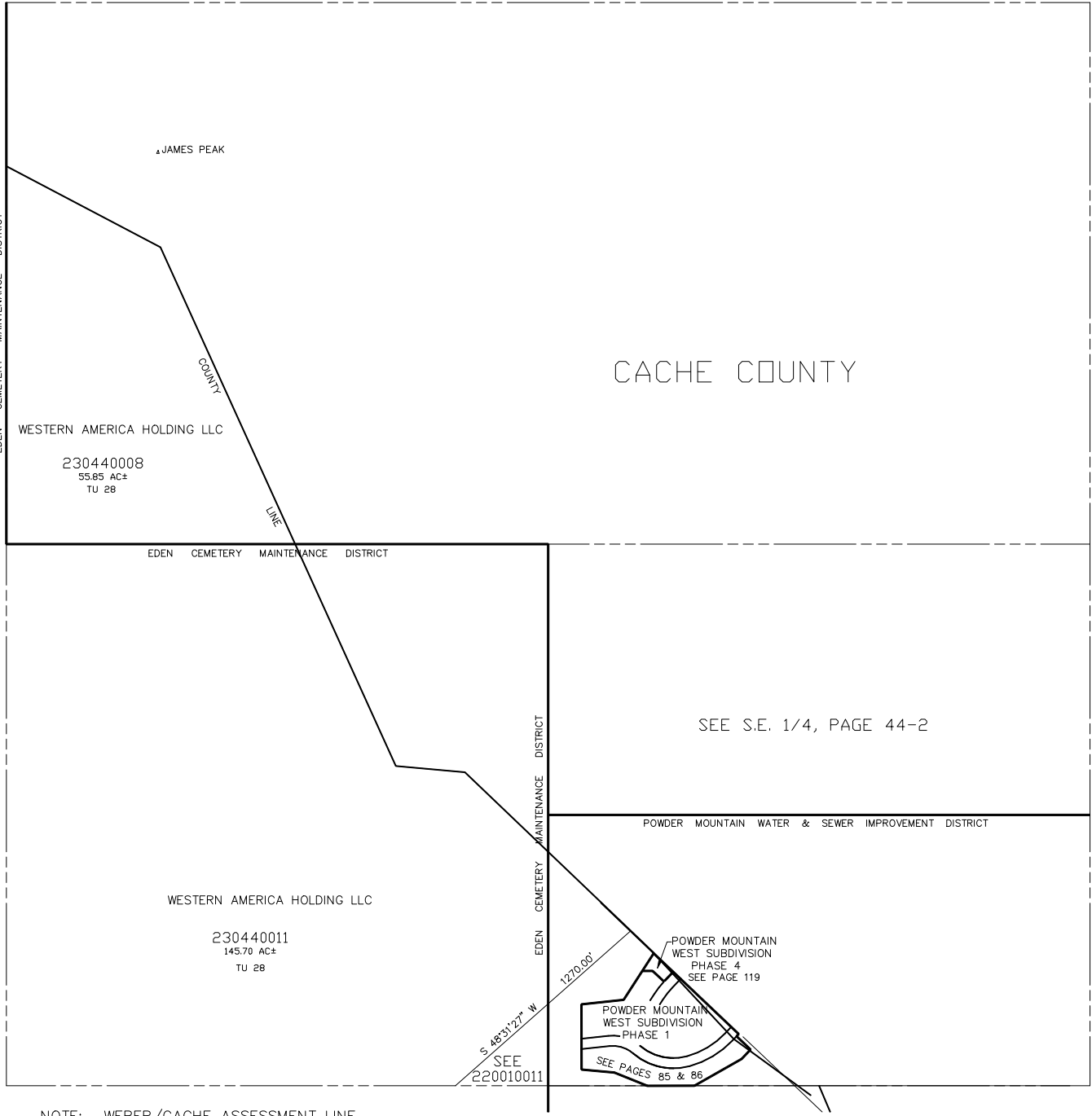
SCALE 1" = 400'

TAXING UNIT: 28, 58

SEE PAGE 44

SEE PAGE 44

SEE PAGE 45



NOTE: WEBER/CACHE ASSESSMENT LINE CHANGED TO COUNTY LINE - 1995

SEE BOOK 22, PAGE 1-1

PW 3-97